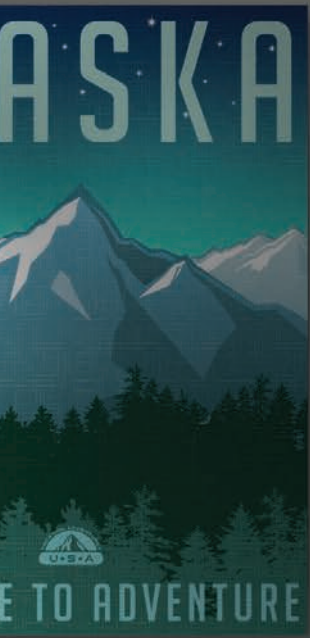


GAS AND ELECTRIC WATER HEATERS

2024 Product Guide

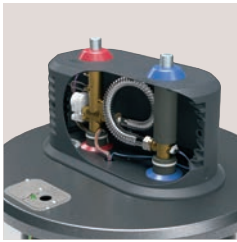


AIR&WATER
SOLUTIONS



ELECTRIC WATER HEATERS

FEATURE HIGHLIGHTS



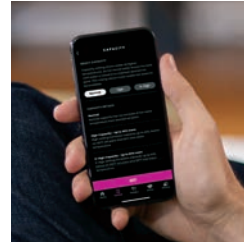
THE FIRST & ONLY CONTROLLABLE ELECTRONIC BUILT-IN MIXING VALVE

Access additional hot water with a valve that lets users select from three capacity settings: Normal, High and X-High.



FLEXIBLE CAPACITY: PATENTED, INDUSTRY-FIRST INNOVATION

Three capacity settings provide up to 60% additional hot water.*



BUILT-IN WIFI

Easily change water capacity setting, adjust temperatures, set vacation mode, schedule and receive notifications with Built-in WiFi powered by SmartHQ™.



LEADING WARRANTY

Our water heaters carry tank and parts limited warranties of 8 and 10 years.



GE40T08CAR GE 40-U.S. GALLONS TALL ELECTRIC WATER HEATER

- Family size 2 to 4*
- 151 Liters
- 33 Imperial gallons
- Thermostat
- Two 3,000 watt Stainless Steel heating elements
- Glass-filled nylon drain valve
- Limited 8-Year Parts Warranty



GE50T08CAR GE 50-U.S. GALLONS TALL ELECTRIC WATER HEATER

- Family size 3 to 5*
- 189 Liters
- 42 Imperial gallons
- Thermostat
- Two 3,000 watt Stainless Steel heating elements
- Glass-filled nylon drain valve
- Limited 8-Year Parts Warranty

COMING SOON FLEXIBLE CAPACITY

Patented, Industry-First Innovation



GE40T10CLR GE SMART 40-U.S. GALLONS TALL ELECTRIC WATER HEATER

- Family size 2 to 4*
- 151 Liters
- 33 Imperial gallons
- Electronic controls
- Built-in WiFi powered by SmartHQ
- Normal/Vacation modes
- Two 3,000 watt Stainless Steel heating elements
- Glass-filled nylon drain valve
- Limited 10-Year Parts Warranty



GE50S10CMR GE SMART 50-U.S. GALLONS ELECTRIC WATER HEATER WITH FLEXIBLE CAPACITY

- Integrated, electronic mixing valve
- 189 Liters
- 42 Imperial gallons
- Performs like an 80-gallon on X-High setting*
- Up to 60% more hot water on X-High setting*
- Family size: 3 to 6**
- Electronic controls
- Built-in WiFi powered by SmartHQ
- Normal/Vacation modes
- Two 3,000 watt Stainless Steel heating elements
- Glass-filled nylon drain valve
- Limited 10-Year Parts Warranty



* Versus comparable water heater without mixing valve at 120° F setting and 58° F inlet water temperature.

** Household sizing based on back-to-back showers, 8 minutes long.



TANKLESS ELECTRIC WATER HEATERS

COMING SOON FEATURE HIGHLIGHTS



UNLIMITED HOT WATER ON DEMAND

Our tankless electric water heater provides instant, continuous water flow.



SPACE SAVER

Compact design takes up significantly less space than a tank-style water heater.



INTUITIVE DESIGN

Adjust temperature and settings with easy-use touch screen.



GE TANKLESS ELECTRIC WHOLE HOME WATER HEATER

- Whole Home solution
- Instant hot water on demand
- Touch Screen
- Ideal for small home, apartment, condos
- Booster for laundry or long pipe run

GE27DNHPDG

27 kW
Up to 5.4 GPM (Gallon Per Minute)
Enough for one sink and three showers simultaneously*

GE24DNHPDG

24 kW
Up to 5.3 GPM (Gallon Per Minute)
Enough for four sinks and two showers simultaneously*

GE18SNHPDG

18 kW
Up to 3.8 GPM (Gallon Per Minute)
Enough for one sink and two showers simultaneously*



GE TANKLESS ELECTRIC POINT OF USE WATER HEATER

- Point Of Use
- Instant hot water on demand
- Touch Screen and remote control
- Booster for laundry or long pipe run

GE15SNHPDG

14.6 kW
Up to 2.9 GPM (Gallon Per Minute)
Enough for two sinks and one shower simultaneously*

GE11SNHPDG

11 kW
Up to 2.5 GPM (Gallon Per Minute)
Enough for two sinks and one shower simultaneously*

GE08SNHPDG

8 kW
Up to 1.7 GPM (Gallon Per Minute)
Enough for three sinks or one shower*



GE TANKLESS ELECTRIC POINT OF USE WATER HEATER

- Point Of Use
- Instant hot water on demand
- Touch Screen and remote control
- Booster for laundry or long pipe run

GE06SNLPGD

5.5 kW
Up to 1.2 GPM (Gallon Per Minute)
Enough for two sinks or one shower*

GE04SNLPGD

3.5 kW
Operates on 120V
Up to 0.7 GPM (Gallon Per Minute)
Enough for one sink in multiple climates*

*Results are based on 72° F inlet water temperature and 105° F outlet water temperature. Faucet represents a fully opened sink faucet with a flow rate of 0.5 GPM. Shower head represents a fully opened shower head with a flow rate of 1.5 GPM.



ELECTRIC POINT OF USE TANK-STYLE WATER HEATERS

COMING SOON FEATURE HIGHLIGHTS



WHOLE HOME FLEXIBILITY

Installation options provide hot water to a specific hookup or to a small house, condo or apartment.



IDEAL LOCATION

Place under the kitchen, bathroom and pantry sinks.



COMPACT DESIGN

Ideal in limited spaces like kitchens, bathrooms, laundry rooms, cabins, RVs, garages, sheds, etc.



STRAIGHTFORWARD CONNECTION

The heater connects right into a 120-Volt supply.



GE10P08BAR 10-U.S. GALLONS GE ELECTRIC POINT OF USE TANK-STYLE

- Point Of Use
- 37.9 Liters
- 8.3 Imperial gallons
- Compact design
- Straightforward connection
- One 1500 watt Stainless Steel heating element
- Aluminum anode rod
- Optional 6' cord included



GE06P08BAR 6-U.S. GALLONS GE ELECTRIC POINT OF USE TANK-STYLE

- Point Of Use
- 22.7 Liters
- 5 Imperial gallons
- Compact design
- Straightforward connection
- One 1500 watt Stainless Steel heating element
- Aluminum anode rod
- Optional 6' cord included



GE02P08BAR 2.5-U.S. GALLONS GE ELECTRIC POINT OF USE TANK-STYLE

- Point Of Use
- 9.5 Liters
- 2.1 Imperial gallons
- Compact design
- Straightforward connection
- One 1500 watt Stainless Steel heating element
- Aluminum anode rod
- Factory-installed 6' cord



**ReaMAX ATMOSPHERIC GAS &
POWER VENT GAS WATER HEATERS**

FEATURE HIGHLIGHTS



CAPACITY, HEAT & RECOVERY

The products in the RealMAX series are real-capacity heaters – they actually contain the water volume they claim to. They hold a true 40 and 50 gallons of water – plus quick recovery (40K BTUs on select 40/50G natural gas units).



CONTROLS DESIGNED FOR PEACE OF MIND

RealMax series water heaters have safety built in. The SmartShield™ system automatically shuts off the unit if abnormal ambient temperatures are detected, and the self-diagnostic feature reports on gas system status via an LED indicator.



LEADING WARRANTY

RealMAX water heaters carry tank and parts limited warranties of 8 years (RealMAX Choice model).

ReaIMAX ATMOSPHERIC GAS WATER HEATERS



CG50S08BXV GE 50-U.S. GALLONS SHORT NATURAL GAS WATER HEATER

- Family size 3 to 5+*
- 189 Liters
- 42 Imperial gallons
- Thermostat Temperature Control
- SmartShield Safety System
- Self-diagnostic
- Brass drain valve
- Limited 8-years Part Warranty



CP50S08BXV GE 50-U.S. GALLONS SHORT LIQUID PROPANE GAS WATER HEATER

- Family size 3 to 5+*
- 189 Liters
- 42 Imperial gallons
- Thermostat Temperature Control
- SmartShield Safety System
- Self-diagnostic
- Brass drain valve
- Limited 8-years Part Warranty

*Household sizing based on back-to-back showers, 8 minutes long.

COMING SOON POWER VENT GAS WATER HEATERS



CG40S08AYV
GE 40-U.S. GALLONS
SHORT POWER VENT
NATURAL GAS
WATER HEATER

- Family size 2 to 4*
- 151 Liters
- 33 Imperial gallons
- Thermostat Temperature Control
- SmartShield™ Safety System
- Self-diagnostic
- Brass drain valve
- Limited 8-years Part Warranty



CG40T08AYV
GE 40-U.S. GALLONS
TALL POWER VENT
NATURAL GAS
WATER HEATER

- Family size 2 to 4*
- 151 Liters
- 33 Imperial gallons
- Thermostat Temperature Control
- SmartShield™ Safety System
- Self-diagnostic
- Brass drain valve
- Limited 8-years Part Warranty



CG50S08AYV
GE 50-U.S. GALLONS
SHORT POWER VENT
NATURAL GAS
WATER HEATER

- Family size 3 to 5+*
- 189 Liters
- 42 Imperial gallons
- SmartShield™ Safety System
- Self-diagnostic
- Brass drain valve
- Limited 8-years Part Warranty



CG50T08AYV
GE 50-U.S. GALLONS
TALL POWER VENT
NATURAL GAS
WATER HEATER

- Family size 3 to 5+*
- 189 Liters
- 42 Imperial gallons
- SmartShield™ Safety System
- Self-diagnostic
- Brass drain valve
- Limited 8-years Part Warranty



CP40S08AYV
GE 40-U.S. GALLONS
SHORT POWER VENT
LIQUID PROPANE
POWER VENT
WATER HEATER

- Family size 2 to 4*
- 151 Liters
- 33 Imperial gallons
- Thermostat Temperature Control
- SmartShield™ Safety System
- Self-diagnostic
- Brass drain valve
- Limited 8-years Part Warranty



CP50S08AYV
GE 50-U.S. GALLONS
SHORT POWER VENT
LIQUID PROPANE
WATER HEATER

- Family size 2 to 4*
- 189 Liters
- 42 Imperial gallons
- Thermostat Temperature Control
- SmartShield™ Safety System
- Self-diagnostic
- Brass drain valve
- Limited 8-years Part Warranty

*Household sizing based on back-to-back showers, 8 minutes long.

TECHNICAL SPECIFICATIONS

GE ReaIMAX SERIES ELECTRIC WATER HEATERS

	GE	
	GE50T08CAR	GE40T08CAR
Rated capacity (gallons)	50	40
Nominal capacity (gallons)	50	40
Liters	189	151
Imperial Gallons	42	33
FEATURES		
Family size*	3-5	2-4
Control type	Thermostat	Thermostat
Temperature setting	90-150°F	90-150°F
Temperature setting factory default	120°F	120°F
Drain valve type	Polymer	Polymer
WEIGHT & DIMENSIONS		
Approx. shipping weight (lbs.)	154	139
Height to water connection (in.)	63-7/8	65-1/2
Tank dimensions (diameter x height in in.)	22 X 62-3/8	20 x 64
Connection sizes—hot water outlet (mnpt)	3/4"	3/4"
Connection sizes—water inlet (mnpt)	3/4"	3/4"
POWER/RATINGS		
Electrical circuit direct wired	208V/240V 60 Hz Dedicated 20 Amp Min	208V/240V 60 Hz Dedicated 20 Amp Min
Heating elements	Stainless	Stainless
Element density	High	High
Lower element (watts)	3,000	3,000
Upper element (watts)	3,000	3,000
Uniform energy factor (UEF)	0.93	0.92
Operating water pressure	20-125 psi	20-125 psi
WARRANTY		
Parts warranty	Limited 8yr Parts warranty	Limited 8yr Parts warranty

*Household sizing based on back-to-back showers, 8 minutes long.

GE BUILT-IN WIFI ELECTRIC WATER HEATERS

	GE	
	GE40T10CLR	
Rated capacity (gallons)	40	
Nominal capacity (gallons)	40	
Liters	151	
Imperial Gallons	33	
FEATURES		
Family size*	2-4	
Control type	Electronic with digital display and app	
Operating modes	Normal/Vacation	
Temperature setting	100-140°F	
Temperature setting factory default	120°F	
Drain valve type	Polymer	
Built-in WiFi with app	Yes	
Diagnostic feedback	Yes	
Sensing anode	*/ —	
WEIGHT & DIMENSIONS		
Approx. shipping weight (lbs.)	139	
Height to water connection (in.)	65-1/2	
Tank dimensions (diameter x height in in.)	20 x 64	
Connection sizes—hot water outlet (mnpt)	3/4"	
Connection sizes—water inlet (mnpt)	3/4"	
POWER/RATINGS		
Electrical circuit direct wired	208V/240V 60 Hz Dedicated 20 Amp Min.	
Heating elements	Stainless	
Element density	High	
Lower element (watts)	3,000	
Upper element (watts)	3,000	
Uniform energy factor (UEF)	0.92	
Operating water pressure	20-125 psi	
WARRANTY		
Parts warranty	Limited 10yr Parts warranty	

*Household sizing based on back-to-back showers, 8 minutes long.

GE FLEXIBLE-CAPACITY ELECTRONIC WATER HEATERS

	GE	
	GE50S10CMR	
Rated capacity at normal setting (gallons)	50	
Capacity at X-High setting* (gallons)	80	
Liters	189	
Imperial Gallons	42	
FEATURES		
Family size on X-High setting**	3-6	
Control type	Electronic with digital display	
Operating modes	Normal/Vacation	
Integrated, electronic mixing valve	Yes	
Capacity settings	Normal/High/X-high	
Temperature setting	100-140°F	
Temperature setting factory default	120°F	
Drain valve type	Polymer	
Built-in WiFi with app	Yes	
Diagnostic feedback	Yes	
Sensing anode rod	Yes	
WEIGHT & DIMENSIONS		
Approx. shipping weight (lbs.)	171	
Height to water connection (in.)	61	
Tank dimensions (diameter x height in in.)	24 x 59-1/2	
Connection sizes—hot water outlet (mnpt)	3/4"	
Connection sizes—water inlet (mnpt)	3/4"	
POWER/RATINGS		
Electrical circuit direct wired	208V/240V 60 Hz Dedicated 20 Amp Min.	
Heating elements	Stainless steel	
Element density	Low	
Lower element (watts)	3,000	
Upper element (watts)	3,000	
Energy factor	0.93	
Operating water pressure	20-125 PSI	
WARRANTY		
Parts warranty	Limited 10yr Parts Warranty	

*Versus comparable water heater without mixing valve at 120° F setting and 58° F inlet water temperature.

**Household sizing based on back-to-back showers, 8 minutes long.

TECHNICAL SPECIFICATIONS

TANKLESS ELECTRIC WATER HEATERS

FEATURES	GE							
	GE04SNLPGD	GE06SNHPDG	GE08SNHPDG	GE11SNHPDG	GE15SNHPDG	GE18SNHPDG	GE24DNHPDG	GE27DNHPDG
Fuel type	Electric	Electric	Electric	Electric	Electric	Electric	Electric	Electric
Temperature setting	86-140° F Range	86-140° F Range	86-140° F Range	86-140° F Range	86-140° F Range	86-140° F Range	86-140° F Range	86-140° F Range
Temperature setting factory default	105° F	105° F	105° F	105° F	105° F	105° F	105° F	105° F
Activation flowrate (GPM)	≤ 0.3	≤ 0.3	≤ 0.4	≤ 0.4	≤ 0.4	≤ 0.5	≤ 0.5	≤ 0.5
Capacity (GPM) @ 37 F inlet	0.3	0.5	0.7	1.1	1.5	2.0	2.7	3.0
Capacity (GPM) @ 42 F inlet	0.3	0.5	0.8	1.3	1.7	2.1	2.9	3.3
Capacity (GPM) @ 47 F inlet	0.4	0.6	0.8	1.3	1.8	2.3	3.1	3.4
Capacity (GPM) @ 52 F inlet	0.4	0.7	0.9	1.5	2.0	2.4	3.4	3.8
Capacity (GPM) @ 57 F inlet	0.5	0.7	1.1	1.7	2.1	2.6	3.6	4.2
Capacity (GPM) @ 62 F inlet	0.5	0.9	1.3	1.9	2.3	2.9	3.9	4.4
Capacity (GPM) @ 67 F inlet	0.6	1.1	1.6	2.2	2.6	3.4	4.6	5.1
Capacity (GPM) @ 72 F inlet	0.7	1.2	1.7	2.5	2.9	3.8	5.3	5.4
Controls	Adjust degree Fahrenheit/Celsius. Adjustable Temperature. Digital Electronic Control							
Installation location	Indoor	Indoor	Indoor	Indoor	Indoor	Indoor	Indoor	Indoor
Integrated safety devices	Flow sensor/High-limit thermostat (on each heating element). Inlet Temperature Sensor. Material Rated for Ignition Containment. Outlet Temperature Sensor.							
Maximum outlet temperature (F)	140	140	140	140	140	140	140	140
Point of use	Yes	Yes	Yes	Yes	Yes	Yes	Yes	Yes
Temperature adjustment amount (degree)	1	1	1	1	1	1	1	1
Uniform energy factor (UEF)	>0.91	>0.91	>0.91	>0.91	>0.91	>0.91	>0.91	>0.91
Water connection location	Bottom	Bottom	Bottom	Bottom	Bottom	Bottom	Bottom	Bottom
Cold/hot water connections (inches)	1/2" Cold Water Inlet; 1/2" Hot Water Outlet	1/2" Cold Water Inlet; 1/2" Hot Water Outlet	1/2" Cold Water Inlet; 1/2" Hot Water Outlet	1/2" Cold Water Inlet; 1/2" Hot Water Outlet	1/2" Cold Water Inlet; 1/2" Hot Water Outlet	3/4" Cold Water Inlet; 3/4" Hot Water Outlet	3/4" Cold Water Inlet; 3/4" Hot Water Outlet	3/4" Cold Water Inlet; 3/4" Hot Water Outlet
Max. operating pressure (psi)	150	150	150	150	150	150	150	150
Min. operating pressure (psi)	25	25	25	25	25	25	25	25
APPEARANCE								
Installation	Wall Mounted	Wall Mounted	Wall Mounted	Wall Mounted	Wall Mounted	Wall Mounted	Wall Mounted	Wall Mounted
WEIGHT & DIMENSIONS								
Overall depth	3.4	2.4	3.7	3.7	2.4	3.7	3.4	2.4
Overall height	9.8	14.1	15.2	15.2	14.2	15.2	9.8	14.2
Overall width	10	8.5	10.2	10.2	8.5	10.2	10	8.5
Approximate shipping weight	6	6	10	10	10	15	15	15
Net weight	5	5	10	10	10	14	14	14
POWER/RATINGS								
Amps	29.2	22.9	33.3	45.8	60.8	75.0	100.0	112.5
Electrical circuit required	30 Amp	30 Amp	40 Amp	50 Amp	70 Amp	40 Amp (x2)	40 Amp (x3)	40 Amp (x3)
Power rating-kW (derated for 208 V)	3.5	5.5 (4.8)	8 (6.9)	11 (9.5)	14.6 (11.3)	18 (15.6)	24 (20.8)	27 (23.4)
Voltage (max.)	120	240	240	240	240	240	240	240
Voltage (min.)	—	208	208	208	208	208	208	208

TECHNICAL SPECIFICATIONS

ELECTRIC POINT OF USE

MODEL NUMBER	GE02P08BAR	GE06P08BAR	GE10P08BAR RealMAX CHOICE
Rated Capacity (gallons)	2.5	6	10
Liters	9.5	22.7	37.9
Imperial Gallons	2.1	5	8.3
Product Application	Residential	Residential	Residential
Wall Mount or Freestanding	Wall Mount/Freestanding	Wall Mount/Freestanding	Freestanding
Fuel Type	Electric	Electric	Electric
Heating Element (Watts)	1500	1500	1500
Voltage	120	120	120
Current (Amps)	12	12	12
Power Cord Included	Yes (assembled)	Yes	Yes
Power Cord Length (ft)	6 ft	6 ft	6 ft
Warranty	8yr Limited Replacement Warranty	8yr Limited Replacement Warranty	8yr Tank and Parts
CONTROLS			
Mechanical Temperature Control	Yes	Yes	Yes
INTEGRATED SAFETY DEVICES			
T&P Valve	Yes	Yes	Yes
T&P Valve Location	Top	Top	Top
Drain Valve	No	No	Yes
Drain Valve Location	N/A	N/A	Bottom-Side
Drain Valve Material	N/A	N/A	Polymer
POWER/RATING			
Anode Rod	Aluminum	Aluminum	Aluminum
Temp Setting Range (F)	70-140	70-140	70-140
Temp Settings Default (F)	OFF	OFF	120
Maximum Water Pressure (PSI)	150	150	150
Connection Sizes - Cold Water Inlet (inch)	0.5 MNPT	0.5 MNPT	0.75 MNPT
Connection Sizes - Hot Water Outlet (inch)	0.5 MNPT	0.5 MNPT	0.75 MNPT
Connection Location	Top	Top	Side
Element Material	Stainless Steel	Stainless Steel	Stainless Steel
WEIGHT & DIMENSIONS			
Product Height (inches)	13	17.65	24.5
Product Width (inches)	13	17.15	14.75
Product Depth (inches)	11.145	14.37	14.37
Product Weight (lb)	16.85	24.9	40.85
Carton Height (inches)	16.14	19.88	28
Carton Width (inches)	14.96	19.69	19
Carton Depth (inches)	14.17	16.93	18
Shipping Weight (lb)	19.84	28.66	46

TECHNICAL SPECIFICATIONS

RealMAX ATMOSPHERIC NATURAL GAS WATER HEATERS

MODEL NUMBER	CG50S08BXV
Rated + Nominal capacity (gallons)	50/50
Liters	189
Imperial Gallons	42
FEATURES	
Family size*	3-5+
Control type	Thermostat
Self-diagnostic control	Yes—LED
Temperature range	50-155° F
Drain valve type	Brass
WEIGHTS & DIMENSIONS (In Pounds and Inches)	
Approx. shipping weight (lbs.)	172
Height to water connection (in.)	47-3/4
Tank dimensions (diameter x height) (in.)	25 x 46-1/4
Connection sizes - cold water inlet/hot water outlet (MNPT) (in.)	3/4"
WEIGHTS & DIMENSIONS (In Kilograms and Centimeters)	
Approx. shipping weight (kg.)	78.02
Height to water connection (cm.)	121.29
Tank dimensions (diameter x height) (cm.)	63.5 x 117.48
Connection sizes - cold water inlet/hot water outlet (MNPT) (cm.)	1.91
POWER/RATINGS**	
Input BTU/hr	40k
First hour rating (gallons)	77
Uniform energy factor	0.63
WARRANTY	
Limited warranty	8-year limited

* Household sizing based on back-to-back showers, 8 minutes long.

** Certified by AHRI testing

Temperature setting factory default 120°F

RealMAX ATMOSPHERIC LIQUID PROPANE GAS WATER HEATERS

MODEL NUMBER	CP50S08BXV
Rated + Nominal capacity (gallons)	50/50
Liters	189
Imperial Gallons	42
FEATURES	
Family size*	3-5+
Control type	Thermostat
Self-diagnostic control	Yes—LED
Temperature range	50-155° F
Drain valve type	Brass
WEIGHTS & DIMENSIONS (In Pounds and Inches)	
Approx. shipping weight (lbs.)	172
Height to water connection (in.)	47-3/4
Tank dimensions (diameter x height) (in.)	25 x 46-1/4
Connection sizes - cold water inlet/hot water outlet (MNPT) (in.)	3/4"
WEIGHTS & DIMENSIONS (In Kilograms and Centimeters)	
Approx. shipping weight (kg.)	78.02
Height to water connection (cm.)	121.29
Tank dimensions (diameter x height) (cm.)	63.5 x 117.48
Connection sizes - cold water inlet/hot water outlet (MNPT) (cm.)	1.91
POWER/RATINGS**	
Input BTU/hr	36k
First hour rating (gallons)	77
Uniform energy factor	0.64
WARRANTY	
Limited warranty	8-year limited

* Household sizing based on back-to-back showers, 8 minutes long.

** Certified by AHRI testing

Temperature setting factory default 120°F

TECHNICAL SPECIFICATIONS

ReaIMAX POWER VENT NATURAL GAS WATER HEATERS

MODEL NUMBER	CG40S08AYV	CG40T08AYV	CG50S08AYV	CG50T08AYV
Rated + Nominal capacity (gallons)	40/40	40/40	50/50	50/50
Liters	151	151	189	189
Imperial Gallons	33	33	42	42
FEATURES				
Family size*	2-4	2-4	3-5+	3-5+
Control type	Thermostat	Thermostat	Thermostat	Thermostat
Self-diagnostic control	Yes—LED	Yes—LED	Yes—LED	Yes—LED
Temperature range	50-155° F	50-155° F	50-155° F	50-155° F
Drain valve type	Brass	Brass	Brass	Brass
WEIGHTS & DIMENSIONS (In Pounds and Inches)				
Approx. shipping weight (lbs.)	150	157	184	179
Height to water connection (in.)	50-5/8	60-1/4	48	59-3/4
Tank dimensions (diameter x height) (in.)	22 x 49-1/8	20 x 58-3/4	25 x 46-1/2	22 x 58-1/4
Connection sizes - cold water inlet/hot water outlet (MNPT)	3/4"	3/4"	3/4"	3/4"
WEIGHTS & DIMENSIONS (In Kilograms and Centimeters)				
Approx. shipping weight (kg.)	68.04	71.21	83.46	81.18
Height to water connection (cm.)	127	152.4	121.92	149.86
Tank dimensions (diameter x height) (cm.)	55.88 x 124.77	50.8 x 149.23	63.5 x 118.11	55.88 x 147.96
Connection sizes - cold water inlet/hot water outlet (MNPT) (cm.)	1.91	1.91	1.91	1.91
POWER/RATINGS**				
Input BTU/hr est.	40k	42k	40k	42k
First hour rating est. (gallons)	78	83	77	82
Uniform energy factor est.	0.68	0.68	0.68	0.68
WARRANTY				
Limited warranty	8- year limited	8-year limited	8-year limited	8-year limited

* Household sizing based on back-to-back showers, 8 minutes long.

** Certified by AHRI testing

Temperature setting factory default 120°F

ReaIMAX POWER VENT LIQUID PROPANE GAS WATER HEATERS

MODEL NUMBER	CP40S08AYV	CP50S08AYV
Rated + Nominal capacity (gallons)	40/40	50/50
Liters	151	189
Imperial Gallons	33	42
FEATURES		
Family size*	2-4	3-5+
Control type	Thermostat	Thermostat
Self-diagnostic control	Yes—LED	Yes—LED
Temperature range	50-155° F	50-155° F
Drain valve type	Brass	Brass
WEIGHTS & DIMENSIONS (In Pounds and Inches)		
Approx. shipping weight (lbs.)	150	184
Height to water connection (in.)	50-5/8	48
Tank dimensions (diameter x height) (in.)	22 x 49-1/8	25 x 46-1/2
Connection sizes - cold water inlet/hot water outlet (MNPT)	3/4"	3/4"
WEIGHTS & DIMENSIONS (In Kilograms and Centimeters)		
Approx. shipping weight (kg.)	68.04	83.46
Height to water connection (cm.)	127	121.92
Tank dimensions (diameter x height) (cm.)	55.88 x 124.77	63.5 x 118.11
Connection sizes - cold water inlet/hot water outlet (MNPT) (cm.)	1.91	1.91
POWER/RATINGS**		
Input BTU/hr est.	36k	36k
First hour rating est. (gallons)	78	77
Uniform energy factor est.	0.68	0.68
WARRANTY		
Limited warranty	8-year limited	8-year limited

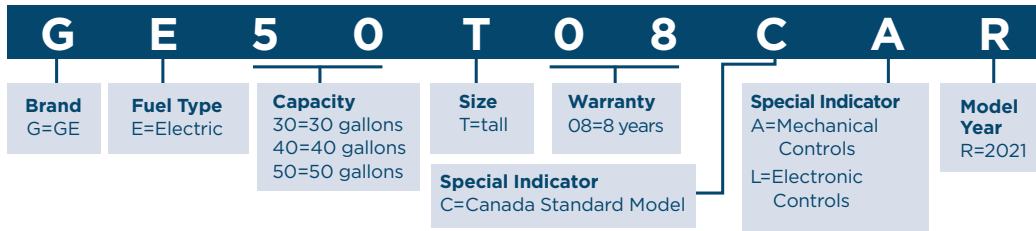
* Household sizing based on back-to-back showers, 8 minutes long.

** Certified by AHRI testing

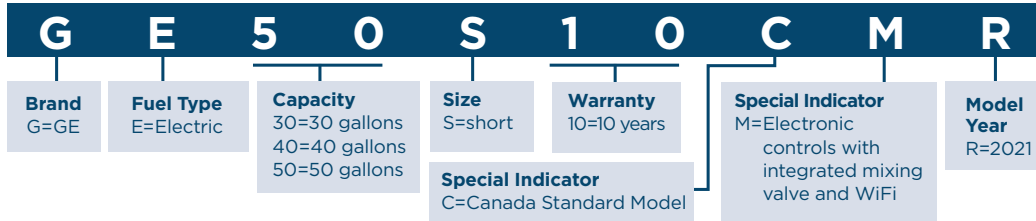
Temperature setting factory default 120°F

WATER HEATER NOMENCLATURE

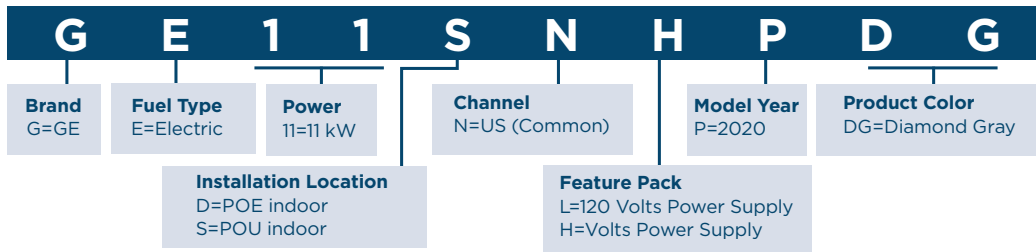
GE ELECTRIC WATER HEATER



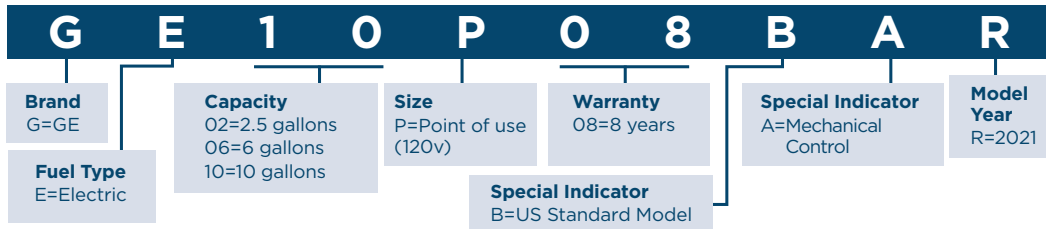
GE FLEXIBLE CAPACITY ELECTRONIC WATER HEATER



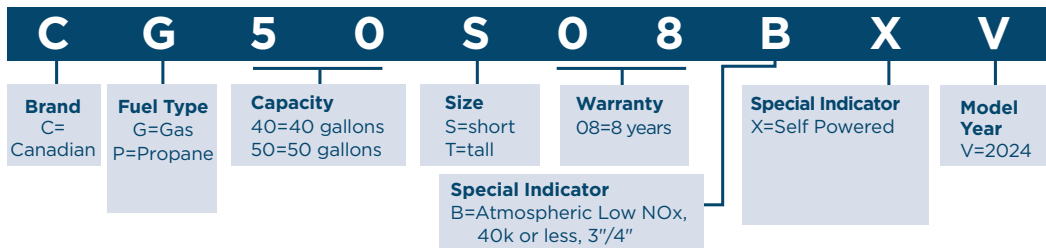
GE TANKLESS ELECTRIC WATER HEATER



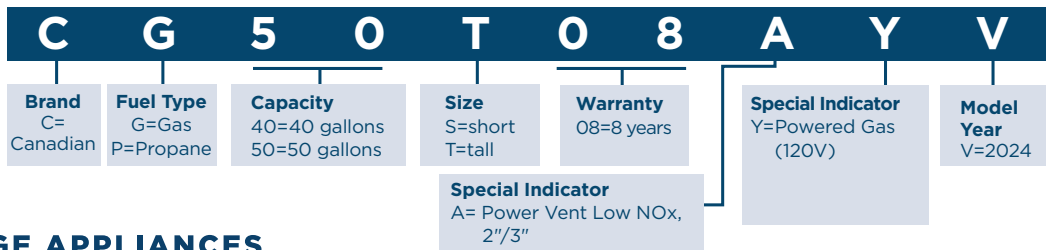
GE ELECTRIC POINT OF USE WATER HEATER



GE ATMOSPHERIC GAS WATER HEATER



GE POWER VENT GAS WATER HEATER



GE APPLIANCES

GE is a trademark of the General Electric Company
Manufactured under trademark license.

Appliance Park
Louisville, KY 40225
geappliances.com
GEA6814876770